

SASQUATCH CANADA

**The Game Camera Image  
by Paul Graves**

*A Probable Sasquatch Looks at a Camera*

**Editing and Coordination  
Christopher L. Murphy**

**Narrator: Lynn Smyth**

WORLD HOMINOLOGY NARRATIVES

*A Sasquatch Canada Educational Video Production. All rights reserved.  
Please contact Sasquatch Canada for permission to use this material in  
any media. We welcome your inquiry.*

# The Game Camera Image

## A Probable Sasquatch Looks at a Camera

(Script for Video Narrative No. 7)

by

**Paul Graves**

**Editing and Coordination: Christopher L. Murphy**

**Narrator: Lynn Smyth**



1

**PAUL GRAVES**

### ~GRAVES IMAGE - #1

I decided to make a full report available in a public forum concerning a game camera photo of a probable sasquatch I obtained in 2012 on the Olympic Peninsula, Washington State. I have provided an introduction, the circumstances leading up to the photo, and an analysis so you will appreciate all aspects of this remarkable incident.

I am a long time investigator into the sasquatch/bigfoot subject and have worked with various people and groups over the years; but mostly doing a lot of research by myself since 1988. I have made public short papers and reports on some of my findings.



2

### ~ MAP SHOWING NORTH CENTRAL WA. - #2

I am a lifelong outdoorsman and grew up on an eastern edge of the Cascade mountains in North Central Washington where there are millions of acres of mountains, forests and shrub-step habitat right at my front and back doors.

When I first started doing sasquatch field work, I roamed the mountains and woods like I always had growing up, enjoying them and acting like a normal human doing human things. Nevertheless, I also thought about ways to gather sasquatch evidence using new tools and information gleaned from past sightings—such as probable sasquatch locations, behavior and so forth. Right from the beginning I wanted to do things a little differently than what had been done before. I am a lifelong artist and musician and frequently think “outside the box” in my work.



3

### ~ DISCUSSION - #3

In 2006 I started a technique of recording “backwards” (I mounted a camera on the back of my jeep backwards, which fed into an old VCR). I did this after talking to some coastal Native friends who said that Sasquatch sometime walk or run behind a vehicle (as well as in front).

I also have a good sighting report provided by two sisters, who I know personally. They saw a possible sasquatch as they rode over a mountain pass while looking out the back window of their car. A large hair-covered “something” was crouched in the ditch beside the road and as soon as they passed it stood up and walked across the road behind them; it was taller than the top of their car.

I have worked with game cameras for many years; thanks to Wally Hersom and his generous contribution of game cameras and associated equipment to me and others.

As a result, I have several cameras I can use. I know that videos and digital photographs probably won't do much to convince scientists, but I really believe what I captured is most likely a sasquatch.

One thing I have never done with my game cameras is tie them to a tree like most people do. I put a lot of thought into camera placement, and from the beginning would usually hide them low to the ground and then point them up at a 45 degree angle. My reason for this is that I have found from doing regular investigations that when there was alleged sasquatch activity in an area, and game cameras were placed by researchers, the activity would stop. It appears the sasquatch knew the cameras were in place—something appears to be alerting them. This led me to think more about camera positioning.

I have determined that most cameras have a passive infrared sensor or (PIR) that can detect animals and people by sensing changes in the infrared light that occurs when a subject enters the camera's detection zone; this causes the camera to react—"triggers" the camera. (I need to mention that wind and sun can trigger the camera as well, so just keep that in mind).

If you place a camera straight and high up then something can be detected from a considerable distance (causing reaction); but if you place it low and at a 45 degree angle something has to be almost on top of it before it will react. I have recorded some interesting images over the years, but nothing like the image I got in 2012 on the Olympic Peninsula.



#### **~OLYMPIC MOUNTAINS - #4**

In 2011 I was involved in a group called the Olympic Project. I got a call from a member about a couple (man and wife) and a friend living in the Olympic mountains; two of them had two really good sasquatch sightings, so I went to investigate.



#### **~COUPLE'S HOME PROPERTY - #5**

The couple's home is the highest on a mountain in a very isolated area with typical western Washington fauna. There is a huge, deep, dark ravine that goes right by the house and continues all the way down the mountain to a saltwater bay. Shown here is a part of the house property and a retaining wall down near the ravine.



#### **~LOOKING DOWN FROM FRONT OF HOUSE - #6**

Here is a photo taken at the front of the house looking down. The ravine starts and goes straight down just on the other side of the tent seen on the left. My wife, Becky, and I were staying in this tent. She is seen sitting in a lawn chair.



### ~PHOTOS OF FOREST AND RAVINE - #7

These images show the flora in the ravine that borders the couple's home. It is what we find throughout Washington State. Doing research in this type of terrain is difficult and often dangerous. Any animal that travels through it, especially at night, must have very good vision.



### ~THE PLANTERS - #8

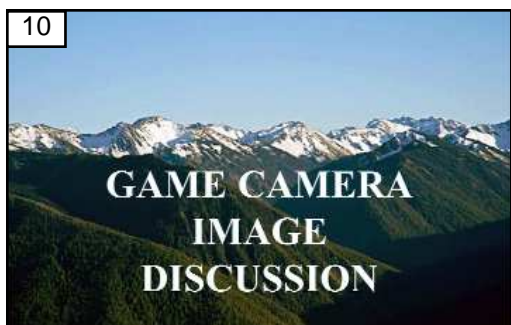
The homeowner's wife saw a sasquatch while watching TV; it had ran across the front yard. A short time later two large planters filled with earth were moved. The planters were near the couple's bedroom. They heard noises outside at night, but did not see anything. When they awoke the next morning they saw that the planters had been shifted; The leg of one planter now rested on the bottom block of a retaining wall. This would be impossible for a human to do. Each planter would weigh about 1,000 pounds. Three of us tried to move one and we could not budge it. I thought this was truly remarkable.



### ~TREE SASQUATCH WAS BEHIND AND GROUND - #9

The friend had a sasquatch sighting while he was working on the retaining wall; he heard an odd noise in the ravine so went over to investigate. At a short distance he saw a massive black sasquatch peeking around a tree. This was odd because the tree was too small to cover its entire body—its wide shoulders stuck way out. The witness had a rifle with him (there are cougars in the area) and he observed the oddity through the rifle scope for about 20 seconds. He then went into a bit of a shock and rushed home.

He related the event to the homeowner (husband) and the two investigated the ravine for possible footprints, but only found disturbed ground near the tree. I later took a photo of the ground and it is seen here with my camera case (5 inches by 3 inches).



### ~DISCUSSION - #10 REPEAT

The homeowner is a trained artist so he sat down with the friend and spent the next three hours on an eyewitness drawing of the sasquatch; taking the time to get the details right while still fresh. This was a life-changing event for the friend, and when I got the game camera photo nine months later and showed it to him, it brought back all the feelings and memories from his experience.

Before I did my investigation, members of the Olympic Project went to the home and put game cameras on trees all around the house. I started to have routine conversations on the phone with the homeowner and one thing was evident right after the cameras went up—it got quiet and all activity seemed to stop. This did not surprise me because there was another investigation that we (Olympic Project) had done on an island in Puget Sound. There was a lot of sasquatch-related activity, but it ceased when cameras were placed

I will mention that there are certain things people do when living in rural homes that I think piques the interest of sasquatch. A lady living on the Puget Sound island in the area of activity would stand on her deck and sing to music. I have used music and believe it has resulted in sasquatch activity.

Although I am no longer associated with the Olympic Project, I am still good friends with Derek Randles, Dave Ellis and others and highly respect their work. Nevertheless, I knew something had to change if we were to get better results with game cameras; I was really thinking “outside the box.”

I talked to the homeowner in the Olympic mountains and had all the game cameras removed. Sure enough within a week or so sasquatch activity returned—banging on the side of the house, strange loud whistles, yells/screams and wood knock

### **~ODD BRANCH STRUCTURE - #11**



Also, odd branch structures were found. In this image it is seen that a branch has been pulled back in the opposite direction.

### **~GIANT “X” - #12**



Next is an image of a giant X made of branches. It was found right behind the house by the ravine; it just showed up one day. It was near the odd branch.

### **~FAKE ROCK AT GRAVE’S HOME - #13**



It was at about this time I came up with the idea of hiding a game camera in a fake rock. I have my own concrete business and I am a long time sculptor, so I formed a fake rock using Styrofoam and made a cavity for a game camera. This was covered in concrete and when dry the Styrofoam was removed and I textured and colored the concrete to look like a natural rock. The finished “rock” was over 200 pounds and took two people to move it I discussed placement with the homeowner and he was open to the idea. The image seen here shows the fake rock at my home after it had dried.

### **~FAKE ROCK IN PLACE AT SITE - #14**



About a month later I drove to the property and we placed the false rock (seen here) in a rock garden with a small pond and a bridge leading to the house front door. Low retaining walls hold all the rocks and pond area together. Everything is right next to the ravine, which literally goes straight down. We placed the false rock on the edge of the rock garden near the wall closest to the ravine. We then inserted the game camera (we provided fresh batteries, which last many months—depending on the number of images recorded).



**~THREE IMAGES ON GAME CAM - #15**

The homeowner only checked the photo card twice in nine months. On the first check nothing of significance was recorded. On the second check (about 9 months since the friend saw the sasquatch) there were three images as seen here. The first image had the homeowner perplexed. He called me that night and sent me the image.



**~GAME CAMERA FRONT ON CARPET - #16**

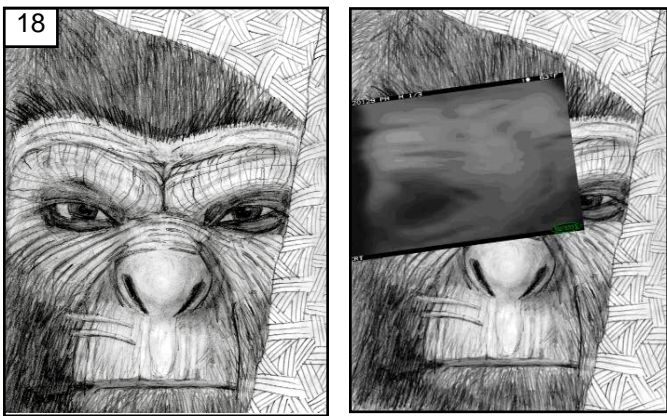
For the record, the game camera I used was a Reconyx PC900 Hyperfire Professional IR, as seen here. At the time this was one of the best game cameras you could buy (\$600-\$700 new). I had the camera set up to take 3 pictures in about 5 seconds; when the IR detects something different it takes consecutive pictures.

I have taken thousands of game camera images over the years, and usually when I get a normally known animal on camera there will be multiple pictures taken. With the Olympic mountain case there was only one "hit" producing the three night images



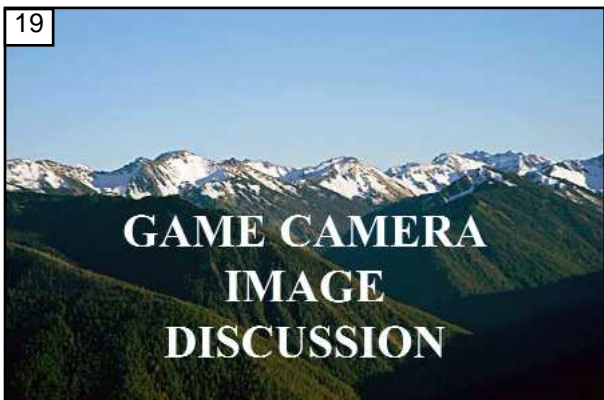
**~FIRST IMAGE ON GAME CAM - #17**

In the first image, I reasoned that I could see what looked like an eye with wrinkles above it, part of a nose bridge, part of another eye and a forehead; but was still not sure. I made a quick drawing and sent it to the homeowner. Right away he e-mailed me and said he had forgotten about his eyewitness drawing he had created nine months earlier.



**~DRAWING AND OVERLAY - #18**

He sent me his drawing "as is" and then his drawing with the first game camera image over-laid. It was almost a perfect match, and when I first saw this I got the chills; it was just too close to discount what we were seeing. When the homeowner showed it to the friend he broke down and started to cry.



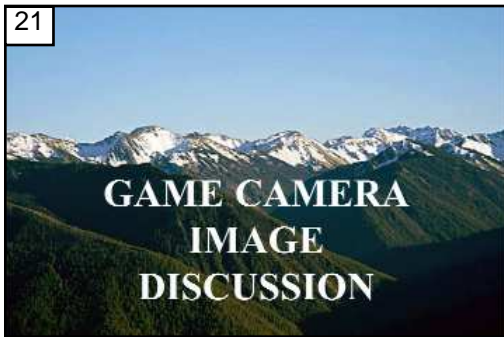
**~DISCUSSION - #19 REPEAT**

Also in the first game camera image it appears the subject may have put its hand up near its face to block the light emitting from the camera. This is something that has been observed in many sighting reports. Sasquatch with their big eyes can probably see past the range of humans. The human retina can only detect incidental light that falls in waves 400 to 720 nanometers long, and supposedly cannot see infrared or ultraviolet light (although some scientist think some humans can see such in certain circumstances). Many cameras have their flashes in the 900 nanometer range.



**~SECOND GAME CAM IMAGE WITH RED ARROW - #20**

In the second game camera image you can see just a little bit of the something or "heat" in the bottom left corner. It seems to me that the subject came up the ravine and poked its head up getting its picture taken; it then ducked down very fast, just one second later and the camera caught only a small piece of it. Two seconds later, third photo provided, it is totally gone. No other photos were taken with the camera that night .



**~DISCUSSION - #21 REPEAT**

There is a lot of discussion as to why we don't get more game camera photos; some say sasquatch can smell cameras (plastic and so forth); some say the IR is giving them away; others say it might be a noise that humans cannot hear. I think in my case it could have been a little of all of them; but I believe the fact that the camera was encased in up to 4 inch of concrete probably masked the noise and/or smell and this tricked the sasquatch for a split second. Nevertheless, we have had the false rock and the camera in place for a couple of years now with no other photos obtained.



**~DOUBLE REVERSE IMAGE - #22**

Seen here is a "double reverse" image that indicates what the sasquatch might look now that both eyes are superimposed on the home-owner's drawing.



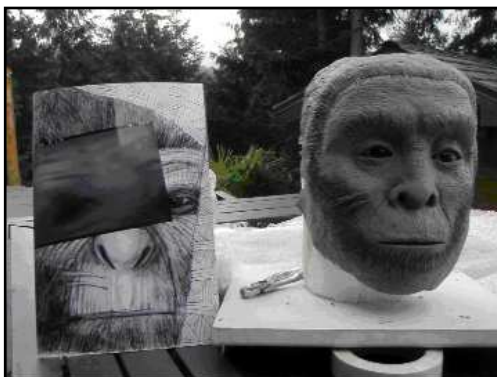
**~BILL MUNNS MAKING CLAY MODEL - #23**

I have shared this material with many of my colleagues over the years. Bill Munns came to the sighting location for a few days to meet with the witnesses. He sat down with the friend and made a bust out of clay based on what was seen and described by the friend.



**~SCULPTURE BY BILL MUNNS) - #24**

Bill did an amazing job replicating the head and features of the sasquatch as seen here. I have provided the overlaid game camera image with Bill's sculpture so you can see the similarity. I will allow a moment for you to study these images.



*CONTINUED*



**~PAUL GRAVES AND BOB GIMLIN - #25**

Furthermore, Dr. Jeff Meldrum spent a couple days at the site and was impressed with the photo aspects of this case. Ron Moorhead and Bob Gimlin also spent some days at the site and each experienced activity. Shown here are photos of Bob Gimlin and I aboard the Washington State ferry on our way over to visit the homeowners and meet with Bill Munns.



26

**PAUL GRAVES**

**~GRAVES IMAGE - #26 REPEAT**

This Olympic mountain property continues to have ongoing sasquatch activity and sightings. The homeowner's wife has had three additional sightings. After about seven or eight years the homeowner had a sighting.

I have spent a number of nights over the years at the location and experienced some activity. The entire area has a rich history of sasquatch being present; including reports by the local Native people who live just below the mountain at the saltwater bay.

In closing I wish to say that I believe there is a great probability that what you are looking at in the first game camera image is a sasquatch from about 2 feet away.

Thank you for your interest.

—00—