

YAKIMA VALLEY MUSEUM - SASQUATCH EXHIBIT

Chris Murphy

OPENING DAY - APRIL 5, 2014



Barry Blount hard at work. Most of the photos here were taken by him. He was our official exhibit photographer.

People with a real passion for what they do can achieve remarkable results. The Yakima Valley Museum people demonstrated this beyond my wildest expectations.



Chris Murphy,
Thomas Steenburg,
Bob Gimlin and
John Kirk.



Museum Director John
Baule.



With Andy Granitto the exhibit
designer/curator.

Jan Brassinne
presenting her
painting to me for
placement in my
exhibit.

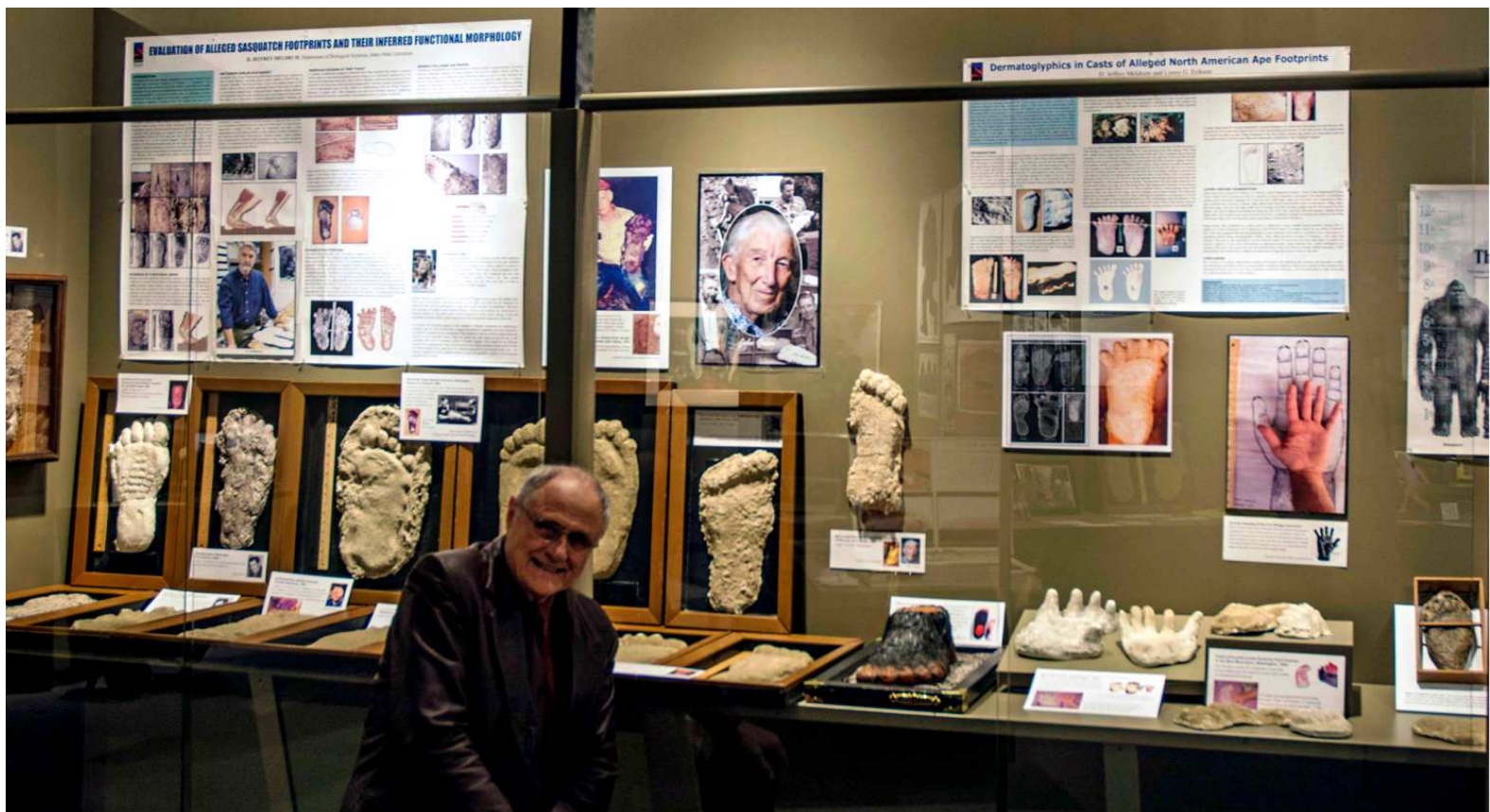




What I refer to as the “18 Panels” grace the first wall in the exhibit entrance room; they have been printed on large sheets of panel board, so are easy to read. You can’t miss them. They essentially summarize everything we know.



The back wall of the entrance room presents the early history of the sasquatch. John Kirk is seen here measuring up to an enhanced version of Patty created by Yvon Leclerc. Yakima is the first museum to present the actual plates that comprise the image (it fits together like a jig-saw puzzle). Although it may not seem so, it’s actually a bit complicated to assemble.



Parts of the left and right walls in the main area of the exhibit. They both extend beyond this, but one can only get so much in a photograph.



A corner section extending from the second image on the previous page. It sort of represents where I work on things. The *Harry and the Hendersons* collection is seen on the upper right.



Another display section, which is also a research area. One will recognize works by RobRoy Menzies.



I made this in about 2002 to illustrate cast-making for kids. Yes, that's Roger making a cast.



Replica bones and sculptures. The large skeleton is that of a 9 foot tall human. A sasquatch skeleton would be somewhat different, but what is seen would likely be in the ballpark.

The stone head seen here is an actual artifact. The plate was engraved by the artist who created the Chehalis logo.



René's corner: Displayed images are actual photographs. In the foreground are blades of bear grass René collected from what he believed was a "bigfoot bed." He reasoned that a sasquatch was likely the only creature that would be able to pull out this type of grass (very deep-rooted—a hand is needed). A photo of the "bed" he found is also provided.





A presentation on the yeti, stone foot, and stone heads. The poster seen partially on the left provides the most recent yeti information. I provide details on the hand bones found in England.



The back wall of the entrance room and the Ruby Creek corner.

The cast seen was molded in clay/plaster from the tracing of the original cast which was destroyed.



Dioramas illustrating possible sasquatch activities. The diorama on the left shows a sasquatch watching a deer drinking from a little pond. The one on the right, shows a sasquatch approaching a tent in the dead of night. Really just “kid’s stuff,” but they are big sasquatch-believers no matter what the world of science says.



Close-up of a part of a larger display (previously presented) so you can see more clearly how the casts are displayed. Also note the use of Dr. Meldrum’s scientific posters on footprints and feet.

PEOPLE PHOTOS



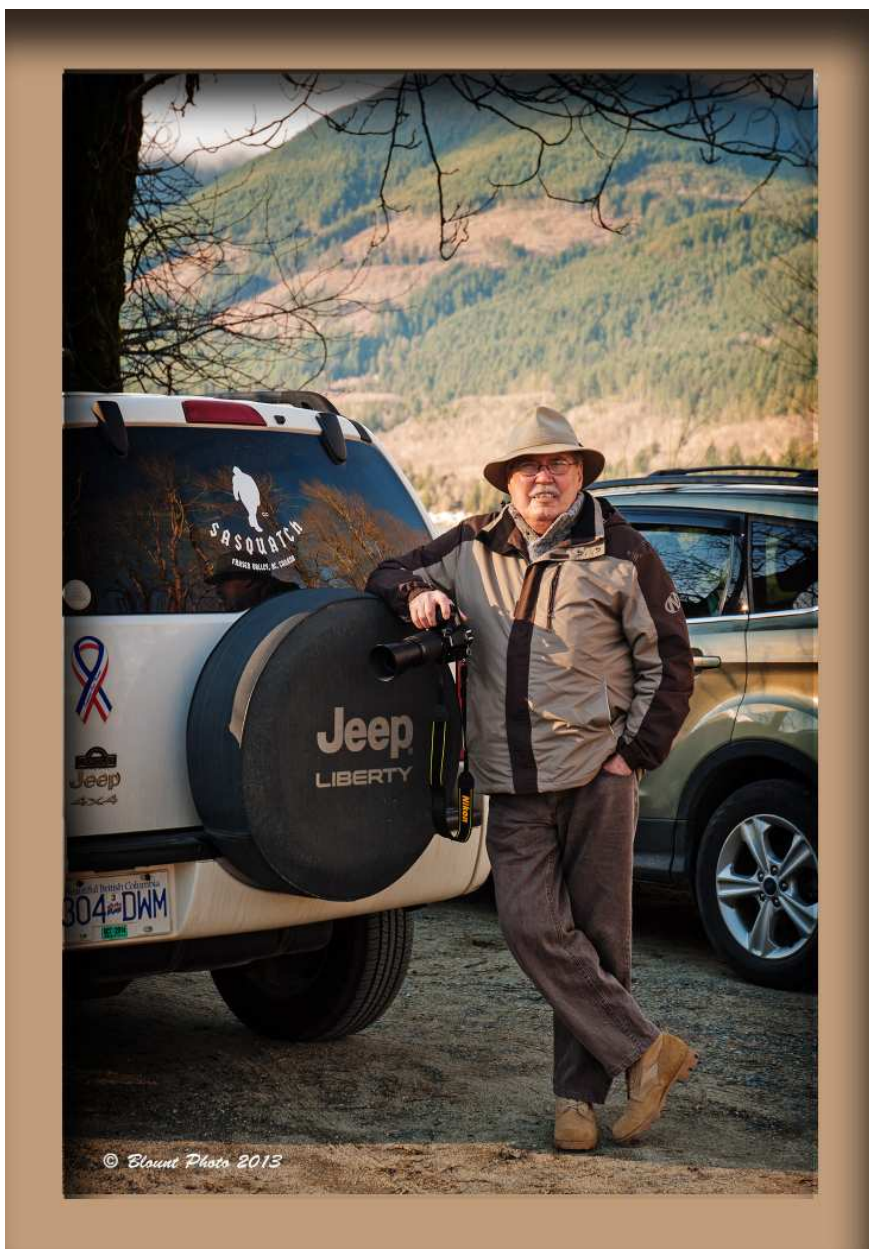




Barry Blount, our official exhibit photographer, in a photo taken last year. Barry worked with me on *Yale and the Strange Story of Jacko the Ape Boy* (Hancock House, 2011). He will soon be leaving to live in Ontario, and I will miss him greatly.

He intends to stay active in sasquatch research and of course with the Internet he will be only a fraction of a second away.

There are definitely sasquatch in Ontario, so I am sure he will soon be hot on their trail.



Copyright: C Murphy/B. Blount, Please request permission to use any material on websites or in other media.