

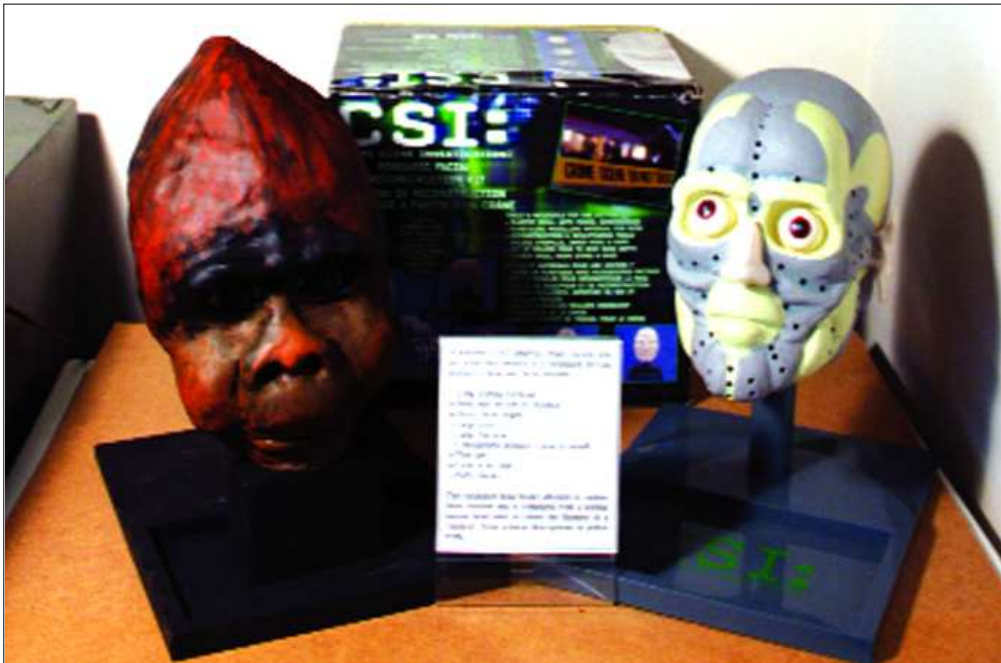
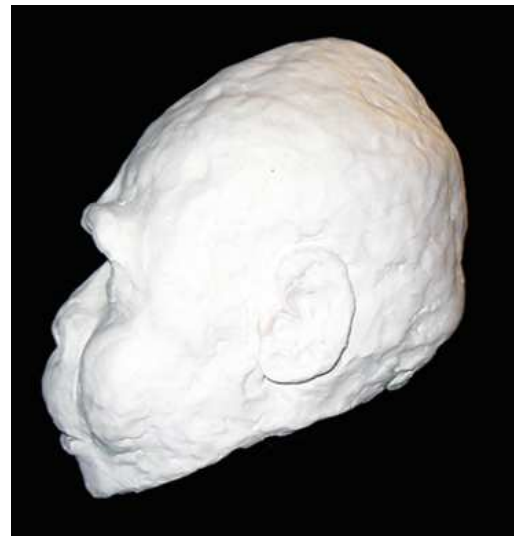
Do Sasquatch Have a Sagittal Crest (Pointed Head)?

Sasquatch sighting reports indicate that the being has what appears to be a sagittal crest (pointed head), and also that it does not have such. Many discussions were held on this issue. With gorillas, only the males have a sagittal crest, and this presented a problem with the Patterson/Gimlin film because the subject is definitely a female and she appears to have a sagittal crest. One anthropologist called the film to task on this point. He stated that Patterson fabricated the subject, intentionally made it a female for effect, but because of his ignorance gave it a sagittal crest. This argument was countered with the possibility that the “point” was likely just hair.

In about 2005 a new toy called CRIME SCENE INVESTIGATOR (CSI) came on the market. It was a kit that provided a supply of special putty and a human head form for the purpose of creating a bust. One created the likeness of a “criminal” in the same way police do to get an idea of what a person actually looked like. The process is often used when only a skeleton is found and an artist creates a bust based on the skull of the person using scientific processes. The putty in the kit stays pliable so can be used time and time again to create different busts.

I bought two kits for the purpose of creating a sasquatch bust using sighting reports—along the lines of identifying a suspect in a crime. I chose to give the bust a pointed head as can be seen in the first photograph on the right. In creating a previous sasquatch bust, I noticed that the point depended on the angle at which the bust was viewed. The second photograph shows a profile view of the same current bust; there is hardly a hint of a pointed head.

It is obvious to me that the main factor as to sasquatch appearing to have a sagittal crest depends on the angle from which they are viewed. I believe they have a somewhat pointed head which creates an illusion. I don't think this has anything to do with a sagittal crest.



Over a few years the putty dried out to where it was reasonably hard so I colored it and used the bust in a presentation as seen here. The extra head form is seen on the right. The size of the bust required the putty provided in both kits.